

Series B900 & B550 VALVES

STAINLESS STEEL

HARDCOATED ALUMINUM

CONSTRUCTION

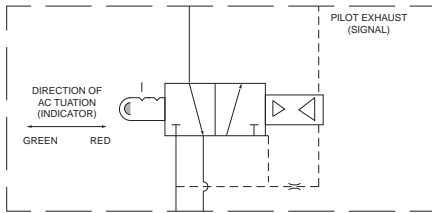
Indicating Relay – Pilot Monitoring Valves

Indicating Relay valves are used to monitor the pilot actuators of the Main Supply Relay valves listed on pages 16-19. The Indicating Relays have two functions. First, to indicate visually on a panel that a circuit malfunction has occurred and secondly, to quickly cause operating pressure to exhaust from the system through the Main Supply Relay valve, allowing a valve operator or pneumatic system to shut-down. When placed in

series with other Indicating Relays, only the relay indicator of the relay controlling the circuit for which a malfunction is sensed will show **red (R)**.

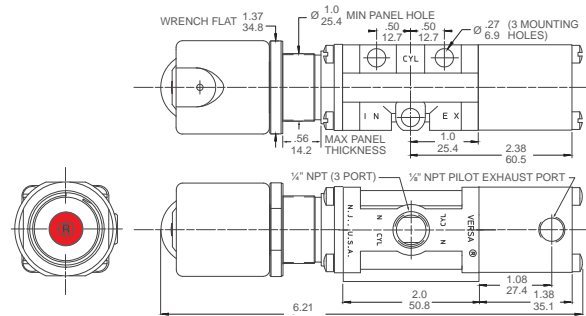
Three types of Indicating Relays are available:
 First Out Indicator-Transmitting type (page 20)
 First Out Indicator-Receiving type (page 21)
 First Out Indicator-Bypass type (page 22)

FIRST OUT INDICATOR/INDICATING RELAY-TRANSMITTING TYPE

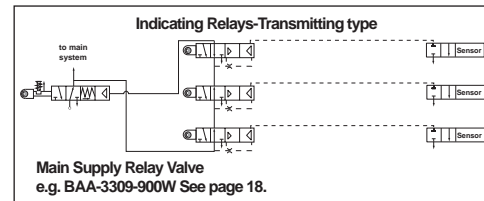


Dimensions are approximate. Consult factory for actual dimensions of specific valves.

BAA-3308-900R		BAA-3308-550R
	Construction: Body, Internals, Caps	
316 stainless steel (NACE MR-01-75)		Hardcoated Aluminum (MIL-A-8625E, Type III, Class1)
Stainless steel	Fasteners-	Stainless steel
FKM (fluorocarbon) O rings	Seals-	FKM (fluorocarbon) O rings
	Pressures:	
25-130 psi (1.7-8.8 bar)	Working (Controlled) pressure range-	15-120 psi (1- 8.2 bar)
5 psi (0.3 bar)	Maximum allowable exhaust backpressure-	5 psi (0.3 bar)
See Charts A & B below	Pilot trip/reset-	See Charts A & B below
Consult Factory	Flow:	Consult Factory
Air - 40 to 50 micron filtration recommended	Media:	Air - 40 to 50 micron filtration recommended
1/4" NPT 1/8" NPT	Porting: Valve Ports- Pilot Ports-	1/4" NPT 1/8" NPT
Panel Mount (1"Ø hole)	Mounting & Installation:	Panel Mount (1"Ø hole)
Red (black character "R") Green (black character "G")	Indicator colors: Trip mode (depressurized)- Working mode (pressurized)-	Red (black character "R") Green (black character "G")
(Consult factory for other color availability)		



Transmitting Relay Circuit (system in mode A - working range)



Operation Mode A

Flow path is open between the Relay inlet and "CYL" port whenever both the Relay inlet and pilot pressure are within the working pressure range in Chart A. In this condition the Relay indicator is **green (G)**. If the Relay inlet pressure is lost while in this mode, the Relay flow position and indicator color will remain unchanged.

Pressure Chart "A" (working range): Indicating Relay-Transmitting type																
Indicating Relay Valve Inlet Pressure	BAA-3308-900R	PSIG	—	—	25	30	40	50	60	70	80	90	100	110	120	130
	BAA-3308-550R	PSIG	15	20	—	30	40	50	60	70	80	90	100	110	120	—
Minimum Reset- Pilot Pressure	BAA-3308-900R	PSIG	—	—	1.7	2.0	2.7	3.4	4.1	4.8	5.4	6.1	6.8	7.5	8.2	8.8
	BAA-3308-550R	PSIG	1.0	1.4	—	2.0	2.7	3.4	4.1	4.8	5.4	6.1	6.8	7.5	8.2	—
Minimum Trip- Pilot Pressure	BAA-3308-900R	PSIG	—	—	10	16	22	28	35	42	50	57	63	70	77	85
	BAA-3308-550R	PSIG	1	4	—	10	15	21	26	32	37	44	47	53	59	—
Minimum Trip- Pilot Pressure	BAA-3308-900R	BAR	—	—	0.7	1.1	1.5	1.9	2.4	2.9	3.4	3.9	4.3	4.8	5.2	5.8
	BAA-3308-550R	BAR	0.07	0.3	—	0.7	1.0	1.4	1.8	2.2	2.5	3.0	3.2	3.6	4.0	—

Operation Mode B

Flow path is open between the Relay "CYL" port and exhaust port whenever the Relay pilot chamber backpressure does not exceed the specifications in Chart B. In this condition the Relay indicator is **red (R)**. The relay will automatically reset to operation mode A when both the Relay inlet and pilot pressure return to the working range, as indicated in Chart A

Pressure Chart "B" (shut-down range): Indicating Relay-Transmitting type																
Indicating Relay Valve Inlet Pressure	BAA-3308-900R	PSIG	—	—	25	30	40	50	60	70	80	90	100	110	120	130
	BAA-3308-550R	PSIG	15	20	—	30	40	50	60	70	80	90	100	110	120	—
Minimum Trip- Pilot Pressure	BAA-3308-900R	PSIG	—	—	1.7	2.0	2.7	3.4	4.1	4.8	5.4	6.1	6.8	7.5	8.2	8.8
	BAA-3308-550R	PSIG	1.0	1.4	—	2.0	2.7	3.4	4.1	4.8	5.4	6.1	6.8	7.5	8.2	—
Minimum Trip- Pilot Pressure	BAA-3308-900R	PSIG	—	—	10	16	22	28	35	42	50	57	63	70	77	85
	BAA-3308-550R	PSIG	1	4	—	10	15	21	26	32	37	44	47	53	59	—
Minimum Trip- Pilot Pressure	BAA-3308-900R	BAR	—	—	0.7	1.1	1.5	1.9	2.4	2.9	3.4	3.9	4.3	4.8	5.2	5.8
	BAA-3308-550R	BAR	0.07	0.3	—	0.7	1.0	1.4	1.8	2.2	2.5	3.0	3.2	3.6	4.0	—